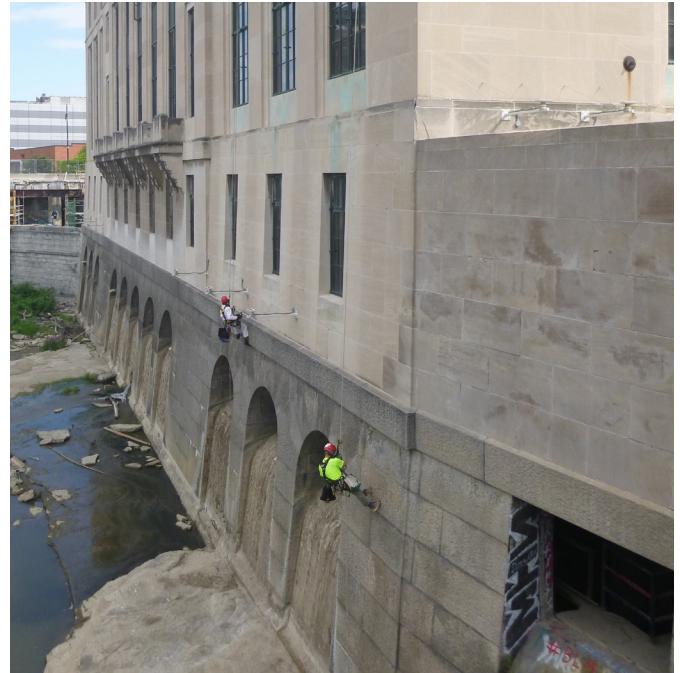


PROJECT PROFILE

Rundel Memorial Library Rochester, NY

VERTICAL
access



Scope of work

Vertical Access was retained by Bero Architecture, PLLC to assist the project team with the development of a comprehensive design for exterior repairs at Rundel Memorial Library in Rochester, NY by performing a survey and documenting existing conditions at the exterior façades and light court.

Building description

Constructed from 1932 – 1935, Rundel Memorial Library was designed by the local architectural firm of Gordon & Kaelber to serve as Rochester's central library.

Built over the Rochester Subway and the Johnson and Seymour millrace, the granite arches at the library's foundation on the west elevation serve as spillways for diverted water flowing into the Genesee River below. Above grade, the steel-framed building is clad in limestone with decorative granite at the spandrels. Rundel Memorial Library features an Art Deco aesthetic combined with the massing and neoclassical rhythm of the Beaux-Arts style.

Challenges:

Conduct a hands-on and close visual survey of existing conditions, including the west elevation directly above the Genesee River.

Photos by Vertical Access

Solutions

Industrial rope access techniques were used to investigate existing conditions at the exterior façades and light court. Special rigging systems were employed when working above the Genesee River to ensure a safe and efficient rescue.

Building owner

City of Rochester, NY

In collaboration with:

- Bero Architecture, PLL
- Jenson/BRV Engineering

