



#### NAICS CODES

238190 Other Structure, and  
Building Exterior Contractors

541310 Architectural Services

541330 Engineering Services

541350 Building Inspection  
Services

541690 Other Technical  
Consulting Services

#### BUSINESS CLASSIFICATION

Small Business - incorporated in  
1998 in New York

TIN / EIN 16-1569768 | DUNS  
077311459

#### KEY CONTACT

Kent Diebolt, Founding Partner  
607-257-4049 office  
607-227-3366 mobile  
kent@vertical-access.com

#### MAIN MAILING ADDRESS

PO Box 4135, Ithaca, NY 14852

#### OFFICE LOCATIONS

369 Asbury Road  
Freeville, NY 13068

32 Old Slip, 10th Floor,  
New York, NY 10005

1053 31st St NW, 2nd Floor,  
Washington, DC 20006

196 Whitfield St,  
Guilford, CT 06437

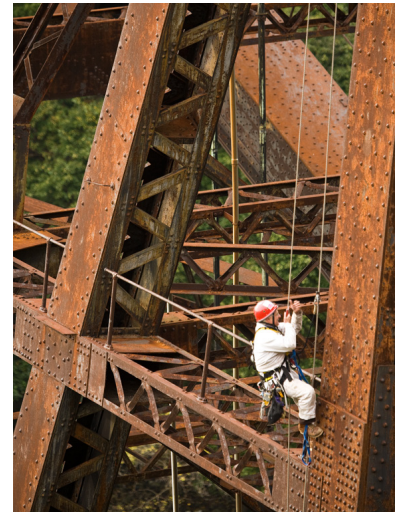
234 E. 100 S., C2,  
Salt Lake City, UT 84111

## Canadian Pacific Railway Bridge, Niagara River Gorge, Niagara Falls, NY

Client: FTL Design Engineering Studio

### Scope of Work

- Characterized primary and secondary structural members.
- Collected direct measurements of bridge components.
- Drafted scaled sections at each type of structural member.
- Performed investigation and documentation of conditions at each of the four points where the arched trusses are anchored to the ground.



## Grand Island Bridges Grand Island, NY

Client: Wilbur Smith Associates

### Scope of Work

- Assisted with rigging and guiding as well as the inspection and documentation of existing conditions for the two bridges.

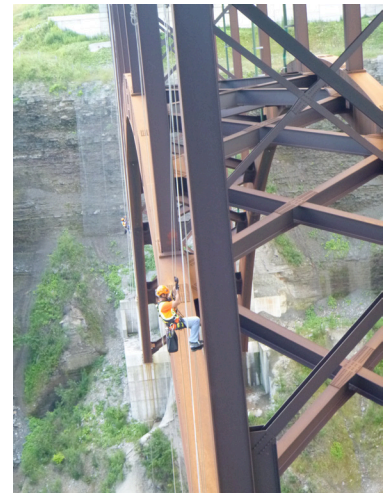


## Cattaraugus Creek Bridges Springville, NY (NYSDOT Region 5, Cattaraugus County)

Client: Prudent Engineering (with Clark  
Patterson Lee)

### Scope of Work

- Assisted with biennial inspection of a twin steel arch bridge.
- Developed and installed rigging and rope systems for Prudent engineers to gain hands-on access to inspect components of the steel structures outside the reach of the under-bridge inspection unit (UBIU).



## **Route 34B over Salmon Creek Lansing, NY (NYSDOT Region 3, Tompkins County)**

Client: Prudent Engineering

### **Scope of Work**

- Assisted with the 2015 Biennial inspection of Route 34B over Salmon Creek by performing industrial rope access rigging and guiding services to Prudent Engineering rope access technicians.



## **Ithaca Bridges Ithaca, NY (NYSDOT Region 3, Tompkins County)**

Client: Lu Engineers

### **Scope of Work**

- Assisted with the 2015 and 2017 Biennial inspections of Stewart Avenue bridge over Fall Creek, Stewart Avenue bridge over Cascadilla Creek, and Thurston Avenue bridge over Fall Creek by performing industrial rope access rigging and guiding services to Lu Engineers rope access technicians.

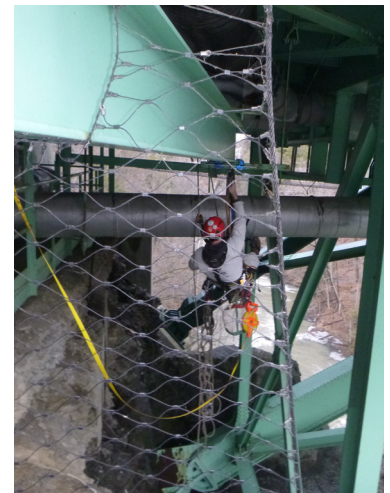


## **Thurston Avenue Bridge Pipe Support Ithaca, NY (NYSDOT Region 3, Tompkins County)**

Client: Elwyn & Palmer Consulting Engineers

### **Scope of Work**

- Investigated and recorded measurements of the pipe support located at the south end of the Thurston Avenue Bridge.



## Arthur Ravenel Jr. Bridge Charleston, SC

Client: Freyssinet LLC

### Scope of Work

- Performed several hands-on inspections of the high-density polyethylene (HDPE) stay cable ducts and steel formwork tubes in the pylons as part of phased warranty inspection.
- Deliverables included a letter of report, stay cable inspection forms, and photographs of survey conditions.
- Reinstalled top duct of a cable.
- Installed fasteners for lightning protection cable on one concrete pylon.



## Irondequoit Bay Bridge Monroe County, NY

Client: DiDonato Associates

### Scope of Work

- Assisted with 2012-2013, 2016-2017, and 2018 Biennial and Interim Inspections for NY Department of Transportation Region 4 of this 2,375 foot, 10-span, 6-lane, continuous truss bridge.
- Performed hands-on inspection of lower lateral members, lower part of the sway frames, wind locks and concrete piers using a combination of industrial rope access and under-bridge units.



## Castleton Bridge Castleton, NY

Client: Wilbur Smith Associates

### Scope of Work

- Assisted the engineer in the inspection and documentation of the concrete piers below the reach of the largest mechanical "snooper" or under bridge unit (UBU) available.

