

# Capabilities Statement

## Buildings - General

[www.vertical-access.com](http://www.vertical-access.com)



**We Go to Extremes**

Helping Architects & Engineers Deliver Superior Documents



## BUSINESS + CONTACT INFO

### NAICS CODES

238190	Other Structure, and Building Exterior Contractors
541310	Architectural Services
541330	Engineering Services
541350	Building Inspection Services
541690	Other Technical Consulting Services

### PSC CODES

C213	A/E Inspect - Non Construct
H399	Inspect Svcs
H999	Misc Test and Inspect Svcs
R425	Engineering and Technical Services
R499	Other Professional Services
Z1	Maint-Alt-Rep, Buildings

### BUSINESS CLASSIFICATION

Small Business - incorporated in 1998 in New York

TIN / EIN 16-1569768

DUNS 077311459

CAGE code 332D9

### KEY CONTACT

Kent Diebolt, Founding Partner  
607-257-4049 office | 607-227-3366 mobile  
kent@vertical-access.com

### MAIN MAILING ADDRESS

PO Box 4135, Ithaca, NY 14852

### PHYSICAL OFFICE LOCATIONS

369 Asbury Road, Freeville, NY 13068  
32 Old Slip, 10th Floor, New York, NY 10005  
1053 31st St NW, 2nd Floor, Washington, DC 20006  
196 Whitfield St, Guilford, CT 06437  
234 E. 100 S., C2, Salt Lake City, UT 84111

## SPECIALIZED SERVICES

### PROFESSIONAL SERVICES

- Existing conditions documentation
- Industrial rope access - SPRAT certified
- Difficult access consulting
- Monitoring instrumentation installation
- Live-feed video

### NONDESTRUCTIVE TESTING SERVICES

- Infrared thermography
- Ultrasonics
- Borescope investigations
- Rebar location
- In situ materials sampling and characterization

## REFERENCES

### Kevin Hildebrand

Senior Project Architect  
Architect of the Capitol  
Ford House Office Building - H2-543,  
Second and "D" Streets, SE  
Washington DC 20024  
202-226-2529  
khildebr@aoc.gov

### Robert Silman

President Emeritus  
Silman  
11 Devonshire Street  
Boston, MA 02109  
617-695-6700  
silman@silman.com



## VERTICAL ACCESS LLC - FIRM OVERVIEW

Vertical Access LLC is a qualified small business that performs specialized inspection services on buildings, monuments, sculptures and civil structures. We are contracted by architects and engineers nationwide for our expertise in construction technologies, materials science, structural engineering, historic preservation, architectural conservation, and fall protection systems evaluation.

- Buildings: academic, commercial, healthcare, industrial, institutional, religious, residential
- Civil Structures: bridges, dams, infrastructure
- Towers, smokestacks, monuments and sculptures

We use direct-to-digital software, TPAS® (Tablet PC Annotation System) for inspections. This system was developed specifically for the building industry and allows our technicians to input graphical and numerical conditions data and photos directly into AutoCAD drawings.



## CORE COMPETENCIES

### ■ Industrial rope access systems used for:

- Existing conditions surveys
- Facade ordinance inspections
- Due diligence and prepurchase real estate inspections
- Access consulting

### ■ Certified

All rope technicians third-party certified by SPRAT, the Society of Professional Rope Technicians

### ■ Nondestructive testing and monitoring services

- Infrared thermography
- Ultrasonics
- Optical device investigations
- Wall tie and rebar location
- In situ materials sampling and characterization
- Monitoring instrumentation installation

### ■ Government agency regulations and protocols

- Experienced with working on federal and state agency projects
- Staff holds current security clearance with Department of Homeland Security

### ■ Site specific safety plans

- Hazard analysis

- Fall protection systems

- Emergency rescue plans for VA personnel

### ■ Direct-to-digital documentation

- Vertical Access has developed a system of collecting survey data while working at-height called TPAS® (Tablet PC Annotation System) <http://www.tpasllc.com>
- AutoCAD drawings are annotated with conditions data in the field using tablet computers

### ■ Deliverables

- Assessment report with images and narratives
- Annotated AutoCAD drawings (print and digital)
- Spreadsheets of extracted data with quantities
- Photographs of condition anomalies keyed to drawings
- Video documentation (high definition video from hand-held or helmet mounted camera)
- Cost estimates and recommendations
- Project website to view and share annotated drawings, photographs and quantities



## RELEVANT PROFESSIONAL AFFILIATIONS

Society of Professional  
Rope Access Technicians  
SPRAT

Structural Engineers  
Association of New York

International Concrete  
Restoration Institute

ANSI - Z359 Fall  
Protection  
Committee Members

American Society of  
Civil Engineers

American Society of  
Safety Engineers

National Council of  
Structural Engineers  
Associations

Association of State Dam  
Safety Officers

Construction History  
Society of America

The Masonry Society

New York Landmarks  
Conservancy

Society for Industrial  
Archeology

## PROJECT PROFILES

### United States Capitol Dome Washington, DC

Client: Office of the Architect of the Capitol

#### Scope of Work

- Performed hands-on inspection of all projecting ornament and cast iron plates at the exterior of the dome from the top of the lantern to the peristyle column capitals.
- Documented existing conditions of cast iron ornament and plates for development of repair documents.
- Carried out temporary stabilization and waterproofing measures at selected areas of ornament.



### Thurgood Marshall US Courthouse New York, NY

Client: Beyer Blinder Belle Architects & Planners

#### Scope of Work

- Inspected and documented the condition of the terra cotta roof and lantern, granite tower and surrounding brick elevations of the plinth.
- Condition report completed with TPAS® (Tablet PC Annotation System), the deliverables included both print and electronic elevations and associated digital photographs.



### Conrad B. Duberstein U.S. Bankruptcy Courthouse Brooklyn, NY

Client: Goody Clancy

#### Scope of Work

- Exterior envelope consultant.
- Completed three separate investigations of the façade, documenting and quantifying conditions and, eventually, planned repairs.
- Inspected and documented façade probes.
- Completed two public safety inspections during the course of the design process.





**Buffalo City Hall**  
**Buffalo, NY**

Client: DiDonato Associates

**Scope of Work**

- Completed a hands-on inspection to identify locations of loose stone and terra cotta. Loose material was removed in a safe and controlled manner, where possible. Stabilization measures were also undertaken.
- Deliverables included volume of over 500 photographs, a set of 41 annotated AutoCAD elevation drawings and copies of videotape made during the course of the investigation.

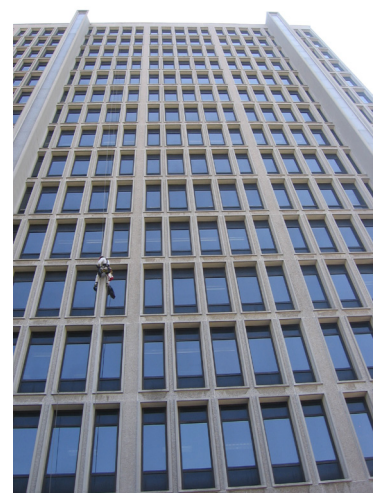


**Rodino Federal Building**  
**Newark, NJ**

Clients: Silman; Dattner Architects

**Scope of Work**

- Inspected and mapped all cracks on the building. Determined whether cracks are stable or dynamic by comparing data from old surveys.
- Investigated a recent lightning strike.
- Mitigated potentially dangerous spalling concrete by removing loose material or installing netting as a temporary stabilization measure.



**Dulles Office Building,**  
**Watertown, NY**

Client: Trautman Associates

**Scope of Work**

- Surveyed and documented existing conditions at the marble panels and brick cladding of the tower, auditorium and annex using hands-on, visual and instrumental investigative techniques.
- Used wall tie detector at representative areas of the brick masonry and spandrel panels to identify the location and spacing of wall ties at the brick and cramp anchors at the marble.



**Milwaukee Federal Building  
Milwaukee, WI**

Client: Quinn Evans Architects

**Scope of Work**

- Performed close visual examination and hammer-sounding of granite masonry at exterior of tower with minimal impact on building occupants and public.
- Documented fault conditions to assist project team with development of repair specifications.
- Removed loose material to temporarily mitigate life safety conditions.



**Gonda Building, Mayo Clinic  
Rochester, MN**

Client: Buildings Consulting Group

**Scope of Work**

- Close visual examination of representative areas of the curtain wall facades with minimal impact on building occupants and public.
- Documentation of fault conditions to assist project team with development of repair specifications.
- Removed loose material to temporarily mitigate life safety conditions.



**Children's Hospital Boston  
Boston, MA**

Client: Gale Associates, Inc.

**Scope of Work**

- Removed loose material to temporarily mitigate life safety conditions identified by project client. Completed work with minimal impact on building occupants and public.
- Documented removal locations using annotated drawings and photographs.

