

Capabilities Statement **State/Provincial/Municipal**

www.vertical-access.com



We Go to Extremes

Helping Architects & Engineers Deliver Superior Documents



BUSINESS + CONTACT INFO

NAICS CODES

238190	Other Structure, and Building Exterior Contractors
541310	Architectural Services
541330	Engineering Services
541350	Building Inspection Services
541690	Other Technical Consulting Services

PSC CODES

C213	A/E Inspect - Non Construct
H399	Inspect Svcs
H999	Misc Test and Inspect Svcs
R425	Engineering and Technical Services
R499	Other Professional Services
Z1	Maint-Alt-Rep, Buildings

BUSINESS CLASSIFICATION

Small Business - incorporated in 1998 in New York

TIN / EIN 16-1569768

DUNS 077311459

CAGE code 332D9

KEY CONTACT

Kent Diebolt, Founding Partner
607-257-4049 office | 607-227-3366 mobile
kent@vertical-access.com

MAIN MAILING ADDRESS

PO Box 4135, Ithaca, NY 14852

PHYSICAL OFFICE LOCATIONS

369 Asbury Road, Freeville, NY 13068
32 Old Slip, 10th Floor, New York, NY 10005
1053 31st St NW, 2nd Floor, Washington, DC 20006
196 Whitfield St, Guilford, CT 06437
234 E. 100 S., C2, Salt Lake City, UT 84111

SPECIALIZED SERVICES

PROFESSIONAL SERVICES

- Existing conditions documentation
- Industrial rope access - SPRAT certified
- Difficult access consulting
- Monitoring instrumentation installation
- Live-feed video

NONDESTRUCTIVE TESTING SERVICES

- Infrared thermography
- Ultrasonics
- Borescope investigations
- Rebar location
- In situ materials sampling and characterization

REFERENCES

Suzanne Norton AIA

Project Coordinator
State of Wyoming Office of Construction Management
Department of Administration and Information
700 West 21st Street
Cheyenne, WY
307- 777-7271
suzanne.norton.wyo.gov

Mark Forrester ASCE

Construction Project Manager
NYC Department of Design & Construction
DCAS/Construction Services
30-30 thompson Avenue
Long Island City, NY 11101
718-391-1103
ForrestMa@ddc.nyc.gov



VERTICAL ACCESS LLC - FIRM OVERVIEW

Vertical Access LLC is a qualified small business that performs specialized inspection services on buildings, monuments, sculptures and civil structures. We are contracted by architects and engineers nationwide for our expertise in construction technologies, materials science, structural engineering, historic preservation, architectural conservation, and fall protection systems evaluation.

- Buildings: academic, commercial, healthcare, industrial, institutional, religious, residential
- Civil Structures: bridges, dams, infrastructure
- Towers, smokestacks, monuments and sculptures

We use direct-to-digital software, TPAS® (Tablet PC Annotation System) for inspections. This system was developed specifically for the building industry and allows our technicians to input graphical and numerical conditions data and photos directly into AutoCAD drawings.



CORE COMPETENCIES

■ Industrial rope access systems used for:

- Existing conditions surveys
- Facade ordinance inspections
- Due diligence and prepurchase real estate inspections
- Access consulting

■ Certified

All rope technicians third-party certified by SPRAT, the Society of Professional Rope Technicians

■ Nondestructive testing and monitoring services

- Infrared thermography
- Ultrasonics
- Optical device investigations
- Wall tie and rebar location
- In situ materials sampling and characterization
- Monitoring instrumentation installation

■ Government agency regulations and protocols

- Experienced with working on federal and state agency projects
- Staff holds current security clearance with Department of Homeland Security

■ Site specific safety plans

- Hazard analysis
- Fall protection systems
- Emergency rescue plans for VA personnel

■ Direct-to-digital documentation

- Vertical Access has developed a system of collecting survey data while working at-height called TPAS® (Tablet PC Annotation System) <http://www.tpasllc.com>
- AutoCAD drawings are annotated with conditions data in the field using tablet computers

■ Deliverables

- Assessment report with images and narratives
- Annotated AutoCAD drawings (print and digital)
- Spreadsheets of extracted data with quantities
- Photographs of conditional anomalies keyed to drawings
- Video documentation (high definition video from hand-held or helmet mounted camera)
- Cost estimates and recommendations
- Project website to view and share annotated drawings, photographs and quantities



RELEVANT PROFESSIONAL AFFILIATIONS

Society of Professional
Rope Access Technicians
SPRAT

Structural Engineers
Association of New York

International Concrete
Restoration Institute

ANSI - Z359 Fall
Protection
Committee Members

American Society of
Civil Engineers

American Society of
Safety Engineers

National Council of
Structural Engineers
Associations

Association of State Dam
Safety Officers

Construction History
Society of America

The Masonry Society

New York Landmarks
Conservancy

Society for Industrial
Archeology

PROJECT PROFILES

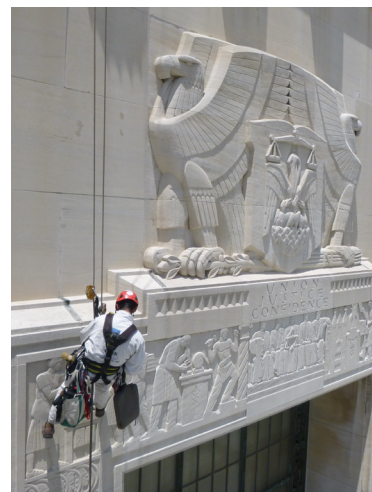
Louisiana State Capitol

Baton Rouge, LA

Clients and Collaborators: The Architectural Studio; Wardlaw & Lasseigne; 1200 Architectural Engineers; John Milner Associates; e2chem Consultants

Scope of Work

- Performed hands-on survey of the exterior masonry.
- Documented existing conditions with TPAS®.
- Conducted non-destructive investigations at selected areas using ground penetrating radar (GPR).



Michigan State Capitol

Lansing, MI

Clients and Collaborators: Quinn Evans Architects; The Christman Company

Scope of Work

- Documented conditions at all parts of the dome, minimizing disruptions to building occupants and eliminating potential impacts to the capitol grounds.
- Documented conditions using TPAS® with digital photographs and high-definition video.



New Jersey State House Dome

Trenton, NJ

Clients and Collaborators: Jan Hird Pokorny; H2L2 Architects/Planners; Preservation Design Partnership; Silman; Building Conservation Associates; Stephen McLaughlin Roofing Consultant

Scope of Work

- Coordinated all of the site investigations and safe access for a complete restoration including pre-restoration inspections and non-destructive investigations
- Returned twice to perform post-restoration condition inspections.



PROJECT PROFILES

Wyoming State Capital Cheyenne, WY

Clients and Collaborators: HDR Architecture;
Preservation Design Partnership; Silman; GB
Geotechnics

Scope of Work

- Performed a conditions survey, paint adhesion tests and removed paint samples, identifying locations that did not date to original construction.
- Mapped cladding materials by location, identifying cast iron, galvanized sheet steel, copper and sheet lead.



Confederation Building St. John's, Newfoundland and Labrador

Client: Jokinen Engineering Services

Scope of Work

- Developed a pilot non-destructive evaluation (NDE) program to identify blind delaminations.
- Performed a hands-on survey of the limestone at the upper portion of the tower, hammer-sounding each individual unit.
- Document faults and deficiencies at the upper portion of the tower to assist with quantification of repairs.



Philadelphia City Hall Philadelphia, PA

Clients and Collaborators: City of Philadelphia
Office of Arts and Culture; Keast and Hood

Scope of Work

- Inspected and documented eight principal bronze sculptures, providing hand-sketched drawings and photographs.
- Obtained samples of sculpture material and used See Snake and live-feed video to inspect interior of sculptures.
- Inspected steel and cast iron cladding on the tower in order to identify sources and causes of ongoing water infiltration.



David N. Dinkins Municipal Building New York, NY

Clients and Collaborators: Swanke Hayden Connell Architects; Stantec Architecture; Urbahn Architects; Superstructures Engineers + Architects

Scope of Work

- In 2006, VA inspected all of the terra cotta ornament at the 25th floor parapet, finding several areas of failure and recommending the installation of netting as an emergency stabilization measure.
- In 2011, VA conducted a hands-on inspection of approximately half of the cast-iron window bays between the 21st and 23rd floors in order to identify potentially unsafe conditions.
- VA returned in 2014 to stabilize three conditions identified during our 2013 inspection of the tower.



Buffalo City Hall Buffalo, NY

Client: DiDonato Associates

Scope of Work

- Completed a hands-on inspection to identify locations of loose stone and terra cotta.
- Deliverables included volume of over 500 photographs, a set of 41 annotated AutoCAD elevation drawings and copies of videotape.



Albany City Hall Albany, NY

Clients and Collaborators: Mesick Cohen Wilson Baker Architects; Simpson Gumpertz & Heger

Scope of Work

- Documented condition of the brownstone masonry at the exterior of the roof and belfry levels.
- Assisted with water infiltration study.

