

# Capabilities Statement

## Bridges and Dams

[www.vertical-access.com](http://www.vertical-access.com)



Occoquan Dam in Fairfax County, VA

**We Go to Extremes**

Helping Architects & Engineers Deliver Superior Documents



## VERTICAL ACCESS LLC - FIRM OVERVIEW

Vertical Access LLC is a qualified small business that performs specialized inspection services on buildings, monuments, sculptures and civil structures. We are contracted by architects and engineers nationwide for our expertise in construction technologies, materials science, structural engineering, historic preservation, architectural conservation, and fall protection systems evaluation. We retain the services of our affiliated company, **Alta Access, LLC**, for any contracting work for which Vertical Access is not insured to perform.

We use direct-to-digital software, TPAS® (Tablet PC Annotation System) for inspections. This system was developed specifically for the building industry and allows our technicians to input graphical and numerical conditions data and photos directly into AutoCAD drawings.

### Deliverables include:

- Assessment report with images and narratives
- Annotated AutoCAD and PDF drawings
- Spreadsheets of extracted data with quantities
- Photographs of condition anomalies keyed to drawings
- High definition video documentation
- Project website to view and share annotated drawings, photographs and quantities

## BUSINESS + CONTACT INFO

238190	Other Structure, and Building Exterior Contractors
541310	Architectural Services
541330	Engineering Services
541350	Building Inspection Services
541690	Other Technical Consulting Services

### BUSINESS CLASSIFICATION

Small Business - incorporated in 1998 in New York

TIN / EIN 16-1569768 | DUNS 077311459

### KEY CONTACT

Kent Diebolt, Founding Partner  
607-257-4049 office | 607-227-3366 mobile  
kent@vertical-access.com

### MAIN MAILING ADDRESS

PO Box 4135, Ithaca, NY 14852

### PHYSICAL OFFICE LOCATIONS

369 Asbury Road, Freeville, NY 13068  
32 Old Slip, 10th Floor, New York, NY 10005  
1053 31st St NW, 2nd Floor, Washington, DC 20006  
196 Whitfield St, Guilford, CT 06437  
234 E. 100 S., C2, Salt Lake City, UT 84111

## SPECIALIZED SERVICES

### PROFESSIONAL SERVICES

- Existing conditions documentation
- Industrial rope access - SPRAT certified
- Difficult access consulting
- Monitoring instrumentation installation
- Live-feed video

### NONDESTRUCTIVE TESTING SERVICES

- Infrared thermography
- Ultrasonics
- Borescope investigations
- Rebar location
- In situ materials sampling and characterization

### REFERENCES

**Andrew Micklus, Jr**, *VP/Chief Operating Officer*  
Freyssinet  
44880 Falcon Place, Suite 105  
Sterling, VA 20166  
703-378-2500  
[drew.micklus@freyssinetusa.com](mailto:drew.micklus@freyssinetusa.com)

**Robert Romocki, P.E.**, *Chief Engineer*  
PSE Puget Sound Energy  
PO Box 97034, PSE-09N  
Bellevue, WA 98009  
425-462-3650  
[robert.romocki@pse.com](mailto:robert.romocki@pse.com)



**RELEVANT  
PROFESSIONAL  
AFFILIATIONS**

American Society for  
Nondestructive Testing

American Society for  
Safety Engineers

Association of State Dam  
Safety Officials

ASTM International

International Concrete  
Repair Institute

ANSI - American National  
Standards Institute



**ABOUT ALTA ACCESS**

Vertical Access partners  
formed Alta Access in 2015  
to meet the contracting  
needs of many of our  
clients in order to perform  
tasks that Vertical Access is  
not insured to perform.

[www.altaaccess.com](http://www.altaaccess.com)

**PROJECT PROFILES**

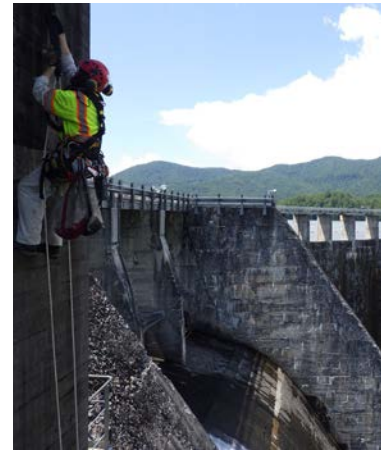
**Santeetlah Dam  
Graham County, NC**

Client: Ground Engineering Contractors

**Scope of Work**

**Alta Access** was retained to assist with the cleaning and seepage investigation of the downstream face of the right abutment. Scope items included:

- Power washed Blocks 3 and 4.
- Installed anchorages at the gate house for a suspended scaffold system and associated fall protection system.
- Developed plans for and assisted with construction of work platforms at the base of Block 5.
- Assisted with the removal of the work platforms at the base of Block 5 at project completion.
- Documented major seepage locations at the downstream face of the right abutment.
- Stabilized two pipes on the northwest face of the gate house.

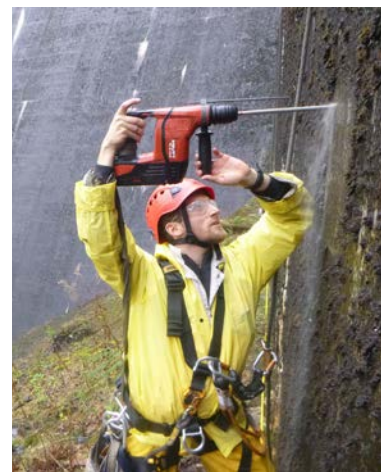


**Lower and Upper Baker Dams  
Skagit and Whatcom Counties, WA**

Client: Puget Sound Energy

**Scope of Work**

- Performed hands-on inspection of the downstream face of the Lower Baker Dam and spillway of the Upper Baker Dam.
- Hammer-sounded the concrete
- Documented existing conditions.
- **Alta Access** designed and installed a horizontal lifeline system on the outboard side of Upper Baker Dam's spillway. The system enables safe access to a previously inaccessible area at the site.



**Eucha Dam**  
**Delaware County, OK**

Client: AECOM

**Scope of Work**

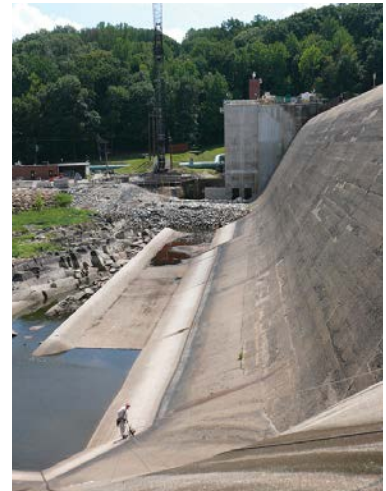
- Used industrial rope access techniques to gain hands-on access to downstream structure of radial gates.
- Measured section loss at beams, gusset plates and rivets using digital calipers.
- Power washed select areas of radial gates to permit unobstructed investigation.

**Occoquan Dam**  
**Fairfax County, VA**

Client: Olson Engineering

**Scope of Work**

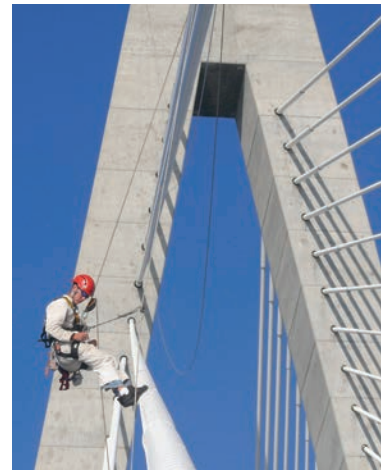
- Performed nondestructive testing of the side spillway using ground-penetrating radar (GPR) to determine rebar size and spacing.
- Provide fall protection for project team during non-destructive testing.

**Arthur Ravenel Jr. Bridge**  
**Charleston, SC**

Client: Freyssinet LLC

**Scope of Work**

- Performed several hands-on inspections of the high-density polyethylene (HDPE) stay cable ducts and steel formwork tubes in the pylons as part of phased warranty inspection.
- Deliverables included a letter of report, stay cable inspection forms, and photographs of survey conditions.
- Reinstalled top duct of a cable.
- Installed fasteners for lightning protection cable on one concrete pylon.



**Irondequoit Bay Bridge**  
**Monroe County, NY**

Client: DiDonato Associates

**Scope of Work**

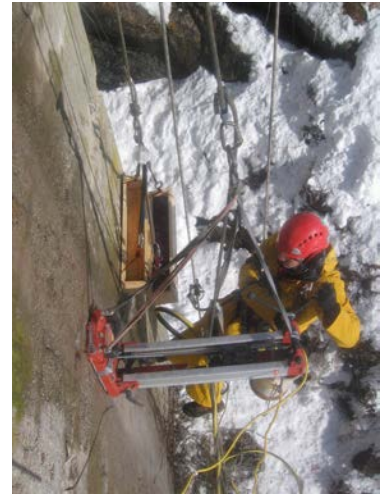
- Assisted with 2012-2013 and 2016-2017 Biennial and Interim Inspections for NY Department of Transportation Region 4 of this 2,375 foot, 10-span, 6-lane, continuous truss bridge.
- Performed hands-on inspection of lower lateral members, lower part of the sway frames, wind locks and concrete piers using a combination of industrial rope access and under-bridge units.
- Survey data and photos uploaded to web portal for instant review and export to inspection forms.

**Popolopen Creek Bridge**  
**Fort Montgomery, NY**

Client: WSP Sells

**Scope of Work**

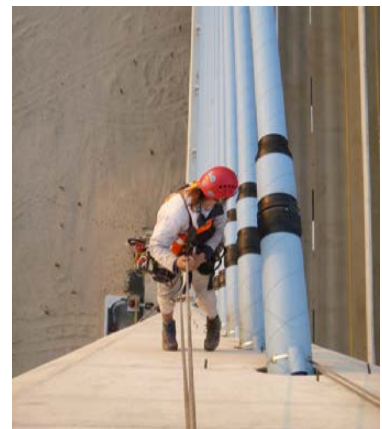
- Took core samples up to two feet long from highly fractured concrete for testing of concrete physical properties.
- Performed in situ carbonation testing of concrete.
- Installed non-shrink grout at core sample locations following removal of cores.
- Gained access to pier below bridge deck with no closure or disturbance to vehicular traffic.

**Charles W. Cullen Bridge**  
**Sussex County, DE**

Clients: Freyssinet, Inc; Skanska USA Civil Southeast, Inc.

**Scope of Work**

- Used industrial rope access techniques to perform maintenance work at the upper stay cables on each pylon.



**Hanging Flume**  
**Uravan, CO**

Clients: Silman; Western Colorado Interpretive Association; Ron Anthony Associates

**Scope of Work**

- Member of a team charged with documenting and understanding the flume's construction methods and details.
- Guided the engineering inspection of the remaining wooden brackets.
- Constructed full-scale mock-up of a portion of the historic flume.

**Castleton Bridge**  
**Castleton, NY**

Client: Wilbur Smith Associates

**Scope of Work**

- Assisted the engineer in the inspection and documentation of the concrete piers below the reach of the largest mechanical "snooper" or under bridge unit (UBU) available.

**Canadian Pacific Railway Bridge,**  
**Niagara River Gorge, Niagara Falls, NY**

Client: FTL Design Engineering Studio

**Scope of Work**

- Characterized primary and secondary structural members.
- Collected direct measurements of bridge components.
- Drafted scaled sections at each type of structural member.
- Performed investigation and documentation of conditions at each of the four points where the arched trusses are anchored to the ground.

